

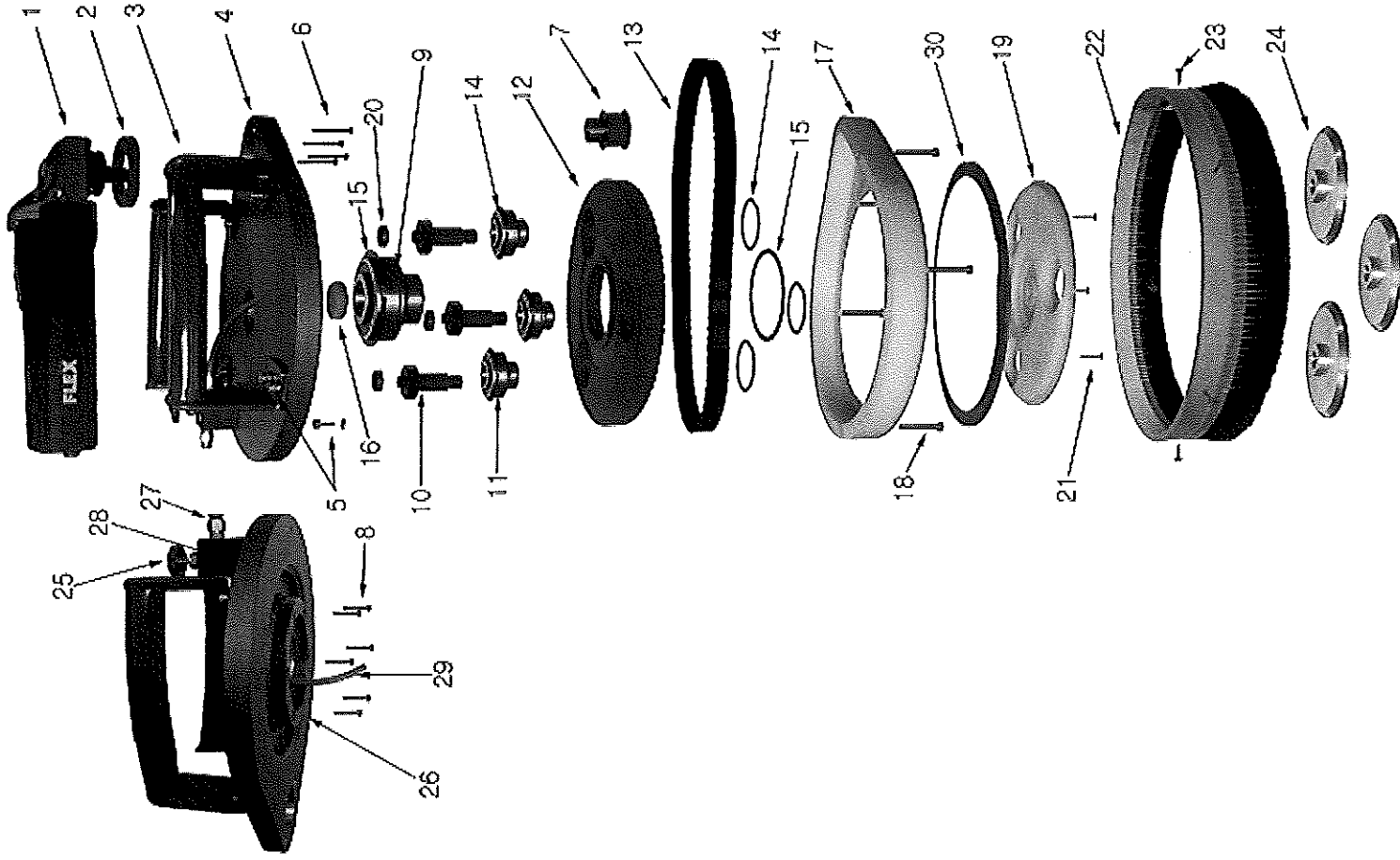
347.671

# LCP 1703 VR 120/USA

Teile-Nr. 354.392 Printed in Germany 12/09  
Blatt 1

LCP 1703 VR

EXPLODED DIAGRAM



Item No. Description Part No. LCP 1703 VR

1	Driver Unit	358.001
2	Plastic Ring	358.002
3	Handle	358.003
4	Base Plate	358.004
5	Bolt M6x15L	358.005
6	Bolt M4x35L	358.006
7	Timing Pulley 13T	358.007
8	Bolt M15x15L	358.008
9	Main Bearing	358.009
10	helical Gear 32T	358.010
11	Bearing	358.011
12	Timing Pulley 84T	358.012
13	Timing Belt 337L	358.013
14	Snap Ring	358.014
15	Snap Ring	358.015
16	Plastic Ring	358.016
17	Cover	358.017
18	Bolt M6x40L	358.018
19	Cover	358.019
20	Bearing	358.020
21	Bolt M4x20L	358.021
22	Brush	358.022
23	Bolt M4x15L	358.023
24	Flange 5/8"-11 unc	358.024
25	Water Valve 1/4PT	358.025
26	Helical Gear 132T	358.026
27	One Touch Nipple 8	358.027
28	Valve Bracket	358.028
29	Water Hose 8x 250L	358.029
30	Seal	358.030

## Twister Instructions

- 1 Plug Power Code into 110V, 60Hz, 20Amp. with Ground Fault Circuit Interrupter
- 2 When using cooling water, always use a Ground Fault circuit Interrupter
- 3 Set tool on its edge or side, rotate the platens by hand to check for rotation.
- 4 Apply abrasive or polishing disc on the flange.
- 5 Turn on water valve to flow water.
- 6 Push start button. Then platform and platen will rotate.

### 7 Speed ranges.

Control	Driver Speed	Platform Speed	Platen Speed
1	1100	157	600
2	1400	211	800
3	1900	282	1070
4	2400	348	1330
5	2900	417	1590
6	3400	481	1930

- 7 Do not use with silicon Carbide grinding stones or diamond cup wheels over than 0.5Kgs.
- 8 Do not push locking button on the driver unit during operation.